

ADVENTURES IN SWEDISH NUMISMATICS



Mark K. Johnson

Polish American Numismatic Society

February 13, 2016

CONTENT

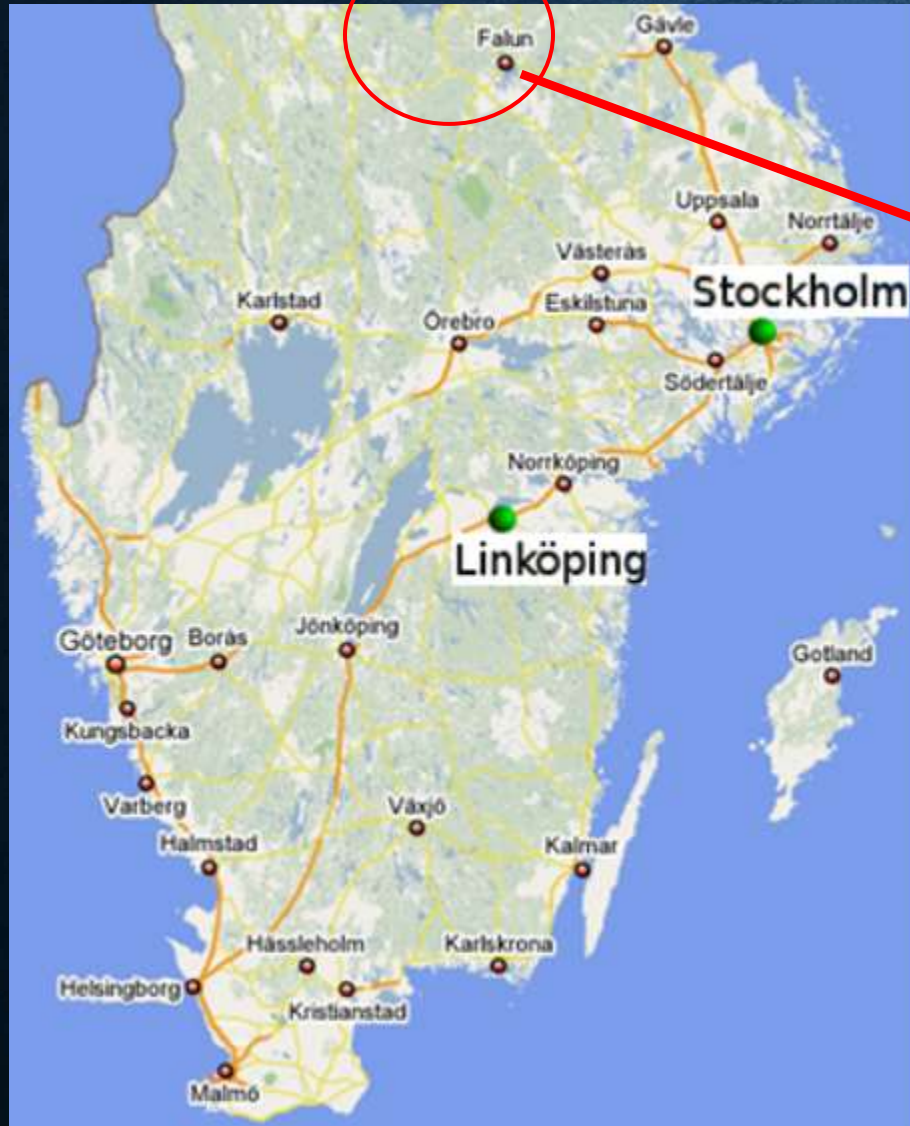
- *Numis-travelogue*
 - Kungliga Myntkabinettet
 - (King's Coin Cabinet, Stockholm)
 - Vasa Ship Museum
 - Falu Gruva
 - (Falu Mine, Falun, Dalarna County)

THE TRIP

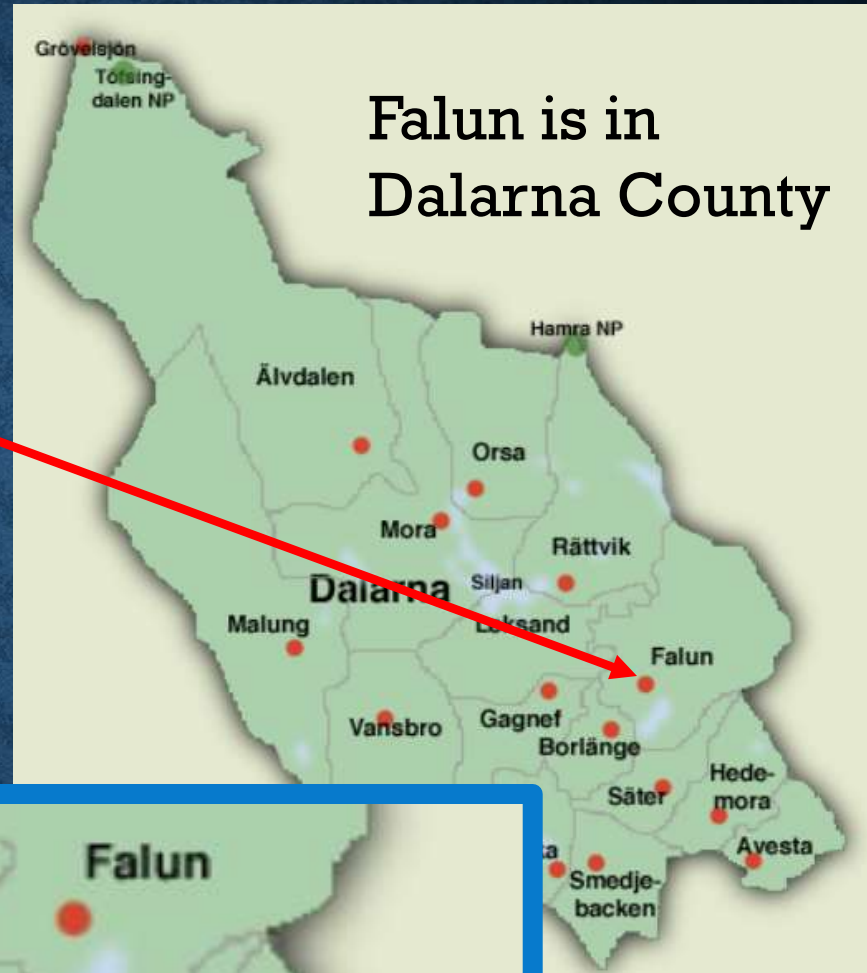
- Stockholm, Sweden
- Falun, Dalarna County, Sweden



GEOGRAPHY



Falun is in
Dalarna County



As far north
as Anchorage,
AK

Mints in
Säter
and Avesta

SELIN'S MYNTHANDEL



Kungliga Myntkabinettet, in Stockholm's Old Town



Across the street from the Royal Palace



Kungliga Myntkabinettet Facts

- Commissioned by King John III (1568-1592)
- Collections dating from the 1570
- Old coins were collected to substantiate Sweden's right to the three crowns in the national coat of arms
- The oldest inventory was drawn up in 1630, when the collection contained only 57 coins and medals
- More than 600,000 objects from around the world
- Europe's largest museum of economy

HANDOUTS

YAP STONE MONEY



Ancients



A collection of various Swedish and Norwegian coins and medals displayed on a red background. The items are arranged in a grid-like fashion, with some labeled with names like 'HEDVIGSFORS', 'LIMÅ', 'GARPENBERG', 'STORA KOPPARBERG', 'STJERNSUND', and 'BISPBERG'. A central yellow card contains handwritten text in Swedish, including 'Dytton No 277', 'Sven Kopparbergslagens', 'Kuhl-Pulver', 'En-Eng Kuhl', '1840 års Märklogg', 'En Säg Kuhl', and 'Kopparbergs Fyrders'. The coins feature various designs, including crowns, letters, and numbers.



1763 6 Öre

Stora Kopparberg Bergstags Co. Mint

Great Copper Mountain Mining Company

Medieval



**Really cool big coin with
important guy on a horse**



Russian Plate Money - 1726



11



12



17



18



16

1644 10 Ducats – Christina Swedish occupation of Riga



44.



45



**Worlds
largest coin**

**10 Daler
Plate money**

44 pounds



FYND AV PLÅTMYNT

De stora plåtmyntfynd som har påträffats visar dels hur högt man värderade koppars dels att handeln med plåtmynt höll sig kvar länge inom och utom landet.

Koppars var eftertraktad inte bara som betalningsmedel utan som ren metall. Samlad representerade den en förmögenhet.



Plate money



Plate money



½ Daler Plate money

Myntorter: Avesta, Ljusnedal, Semlan
Valörer: 4, 2, 1, 1/2 daler s.m.
Myntförordning: 17 maj 1715 gällde till och med 1776



Plåtmynt i "ovanlig myckenhet"

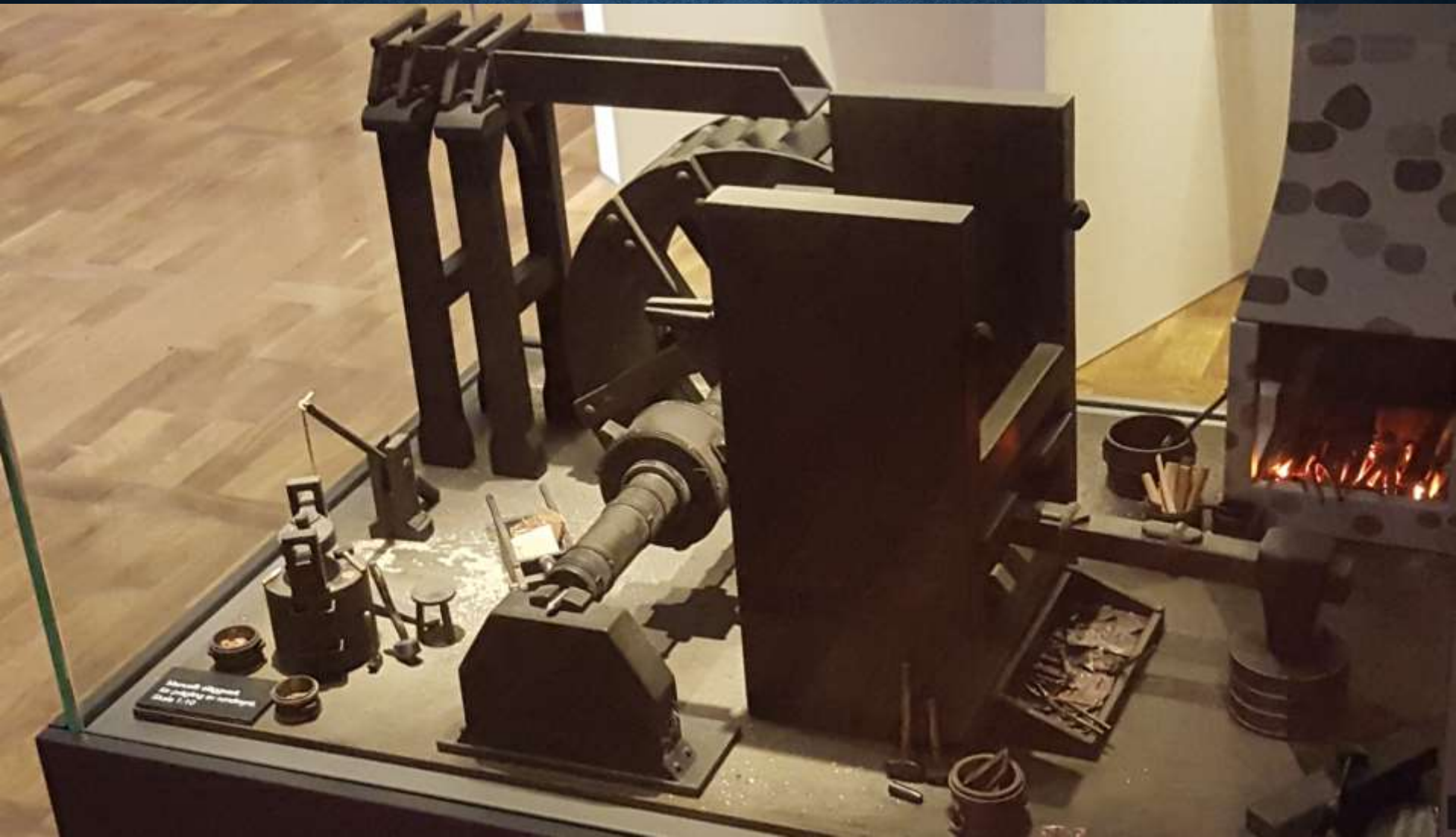
År 1758 krävde finnar och norrlänningar plåtmynt i "ovanlig myckenhet". Allmogem i Österbotten köpte spannmål från

Plate money dies

Export av koppar
Våra handelspartners hade vant sig vid stämplarna
på kopparplåtarna. De upplevdes som garanti- och
kvalitetsmärken för den koppar som Falun exporte-
rade. Därför präglades plåtmynt fram till 1809.



Plate money stamping



der skrift och Signeter attesterat; Salen och till yttelmynte wille med sig
dher til förordnade större och mindre Banco Sigiller verificerat. Datum Stock-
holms Banco An. 1666 den 22. Maj

Dal. 10. Sölf. Mynt.

Johan Löngrück. Mik. Löngrück.

Anno 1669.

— DUCATER.

— RIXDALER.

— Daler Sölvvermynt.

= 44 $\frac{2}{16}$ Daler Kopparmynt.





Swedish coppers

Klippes (1624-6)



Uncut
pair of
1645
1 Öres

Uncut
strip of 5+
1625
1 Öre
klippes





**Silver
Christina
– Dea
Roma
Medal
(c.1680)**



The Grand Hotel





Herring

Aquavit









Vasa Museum

- Swedish warship built 1626 – 1628 for Gustavus Adolphus' military expansion
- 226 ft long, 172 ft high, 64 cannons, crew of 445
- Center of gravity was too high
- Sank a mile into maiden voyage
- Salvaged in 1961
- Many artifacts and the remains of 15 people were found



Vasa Ship Museum















Johan var 45-50 år gammal och 180 cm lång.
Fragments av hög kvalitet tyder på
att Johan kan ha haft en hög social ställning.
Hans var dock mörkt av livet.
En sluttad höft och en knäskad fot gjorde att
han med stor sannolikhet luktade.

Johan är en av tre nya rekonstruktioner
som möjliggjorts genom bidrag från
Bevillingen Vasauniversitetet.

Johan was 45-50 years old and 180 cm tall.
Fragments of high quality wood fabric suggest
that Johan was a man of higher rank.
He had led a hard life.
A worn out hip and a crushed foot probably
made him limp.

Johan is one of three new reconstructions
made possible by contributions from
the Friends of Vasa.

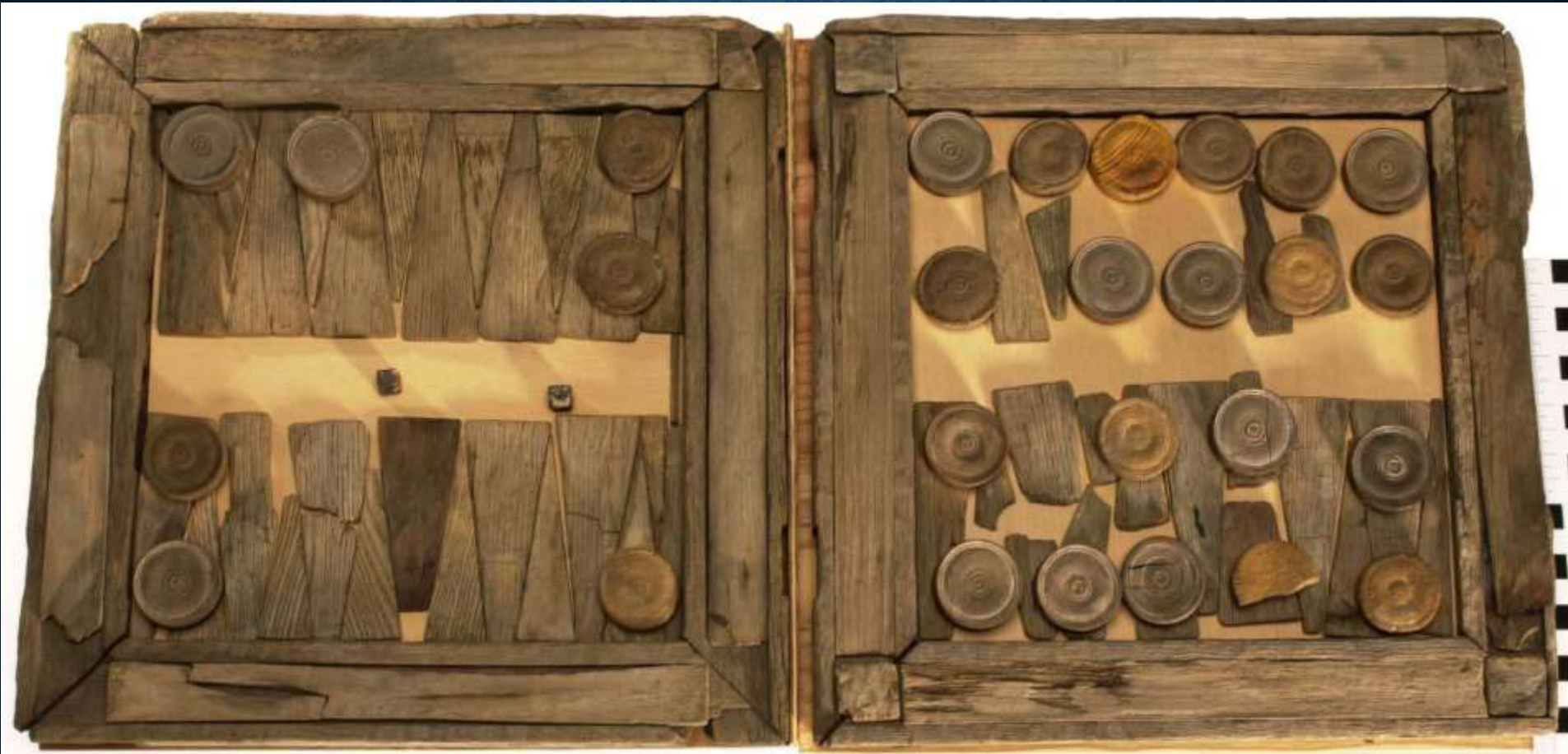


Rekonstruktion av Johan, en gammal och liten kropp.
Fragments av hög kvalitet tyder på att Johan
kan ha haft en hög social ställning.
Hans var dock mörkt av livet.
En sluttad höft och en knäskad fot gjorde att
han med stor sannolikhet luktade.

Johan är en av tre nya rekonstruktioner
som möjliggjorts genom bidrag från
Bevillingen Vasauniversitetet.

Rekonstruktion av Johan, en gammal och liten kropp.
Fragments av hög kvalitet tyder på att Johan
kan ha haft en hög social ställning.
Hans var dock mörkt av livet.
En sluttad höft och en knäskad fot gjorde att
han med stor sannolikhet luktade.

Johan är en av tre nya rekonstruktioner
som möjliggjorts genom bidrag från
Bevillingen Vasauniversitetet.







OFF TO FALUN





Dalacarlän Horse
“Dala Horse”
is from Dalarna County









**FALU
GRUVA**



GREAT COPPER MOUNTAIN (STORA KOPPARBERG)

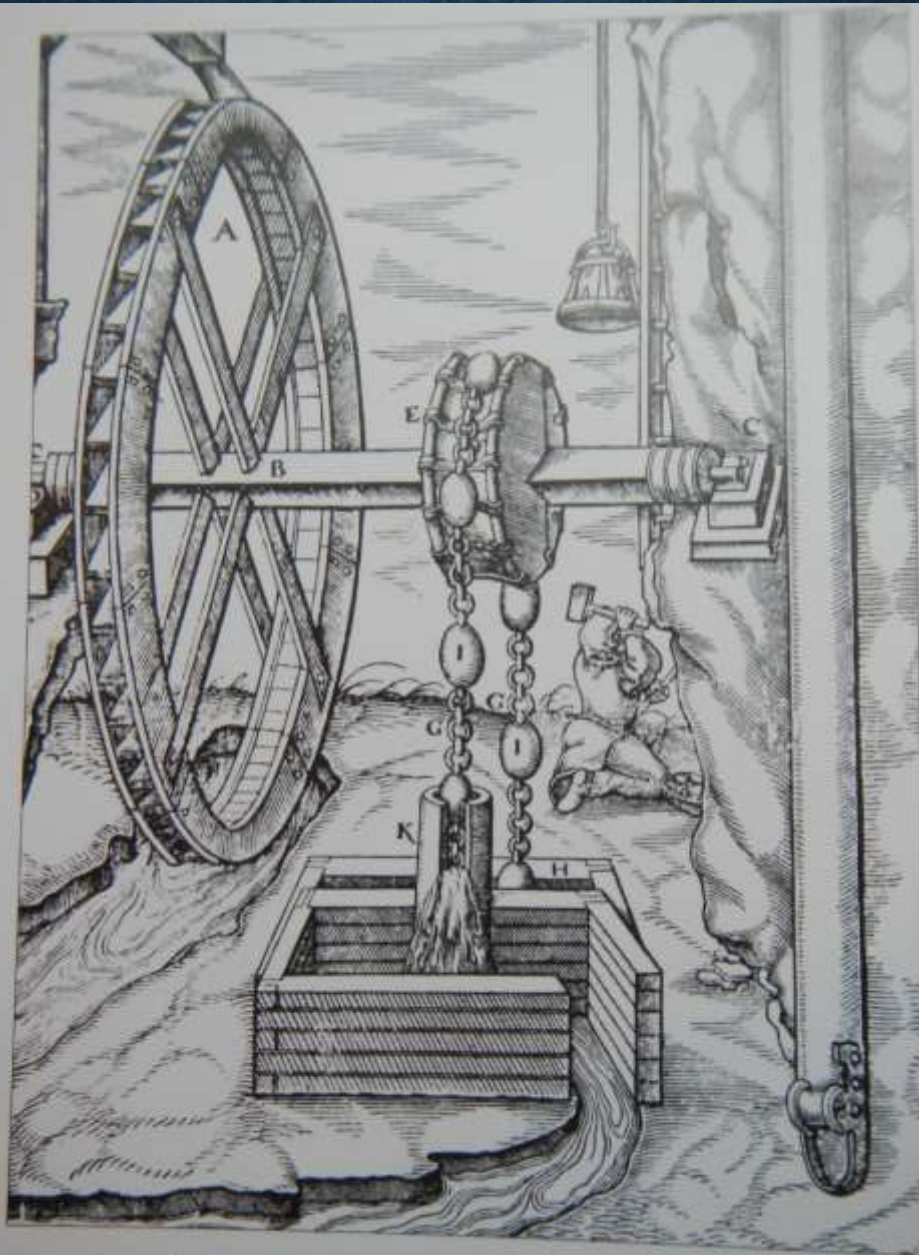


http://en.wikipedia.org/wiki/File:Falu_koppargruva.jpg

- at Falun,
Dalarna County,
Sweden
- 1000 years of
continuous
copper mining
operation
- 1687 collapse
created the
“Great Pit”

HANDOUTS





Pumping device of the same kind as the pipe-pouch machine at Falun Mine. From G. Agricola's *De re metallica*, 1556.



Horses at work by the Carl XI shaft at Falun Mine. Detail from an engraving by Jan van den Aveelen from 1701, based on Eric Dahlberg's drawing from 1699. *Suecia Antiqua et Hodierna*.



A woman is depicted on Pehr Hilleström's well-known painting from Gustav III's visit to the mine in 1788. At the dinner down in the Great Council Chamber at a depth of 211 metres, the woman can be seen at the table to the left, ready to serve soup.

Carl Gustaf
29/10 1973

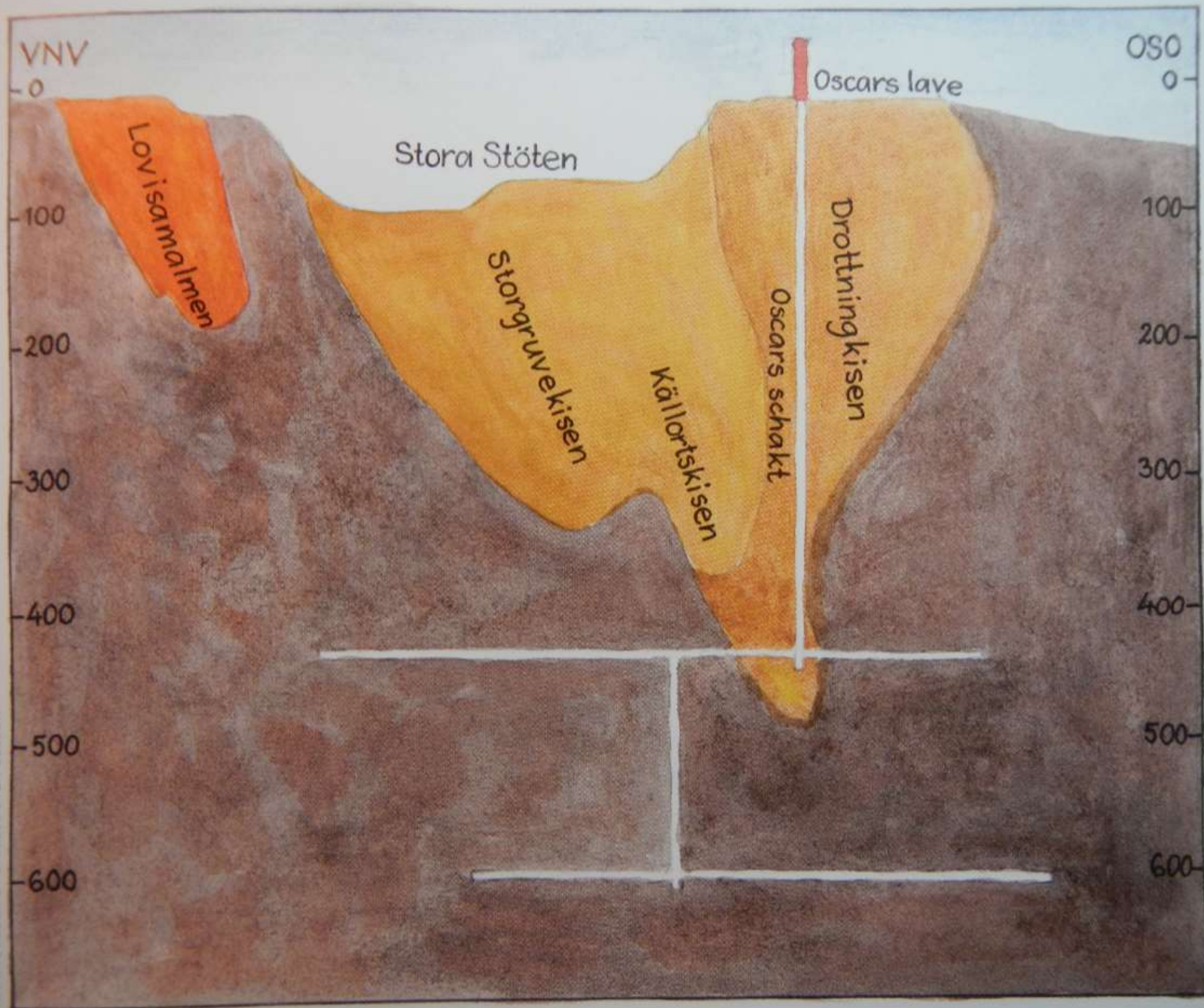
Wald
Lonya 22/12/4
Fertit Carl
92/5-46

Gustaf Adolf $\frac{11}{7}$
1898.

Carl
1968.

1971 20/5
Wald
Wald
Wilhelm
5-7-45

Wald
29/12/4
1971
Wald
20/5



ting room,
n stores and

Resting-house

Dead-roasting
house

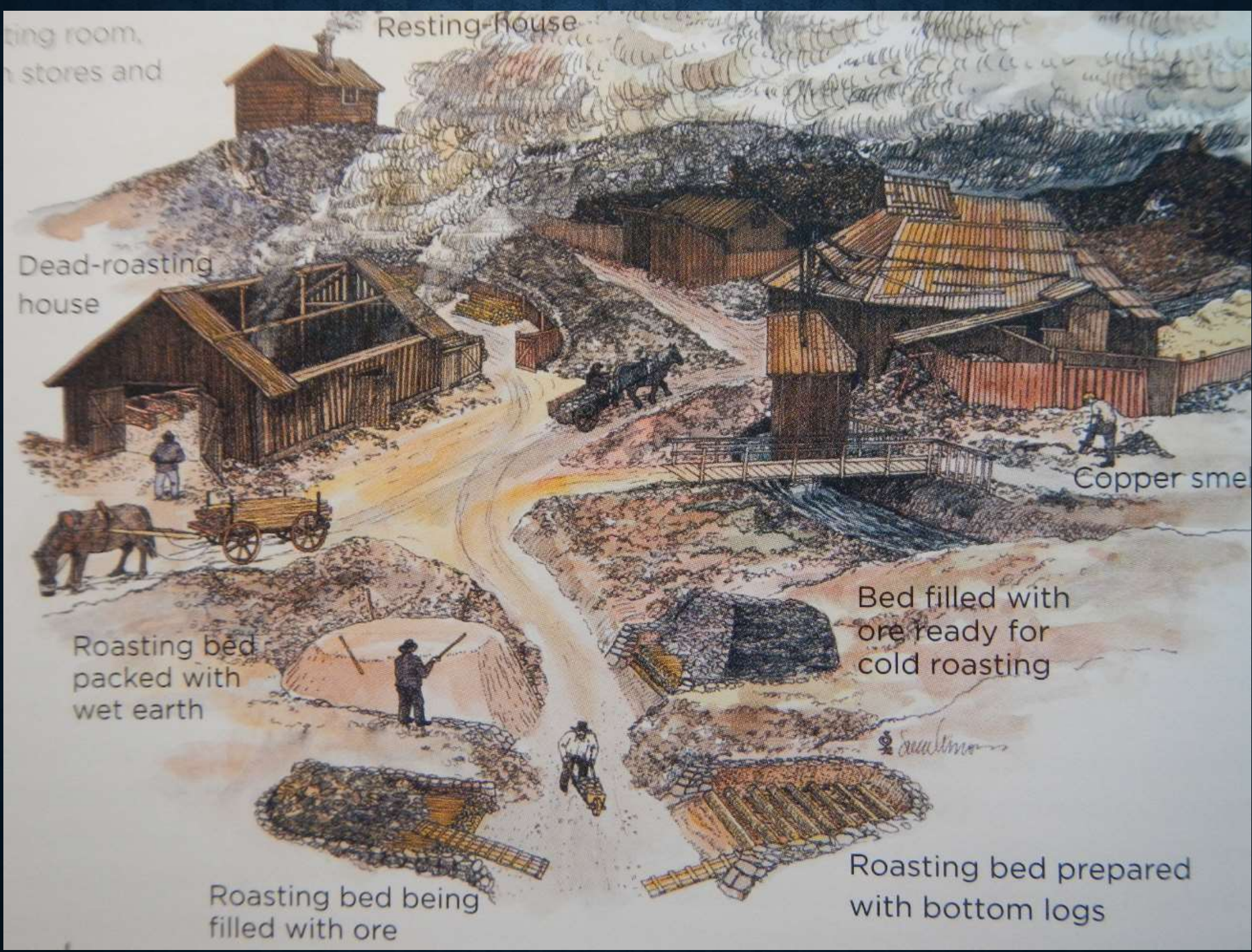
Copper sme

Roasting bed
packed with
wet earth

Bed filled with
ore ready for
cold roasting

Roasting bed being
filled with ore

Roasting bed prepared
with bottom logs





Roasting beds at different stages, one burning and one being emptied. Illustration on Hans Ranie's map of the



STORA ENSO ARCHIVE

Matte smelting house in Falun. Illustration on Hans Ranie's map of the mine from 1683.

FALUN

Copper Foundry at the Falun Mine

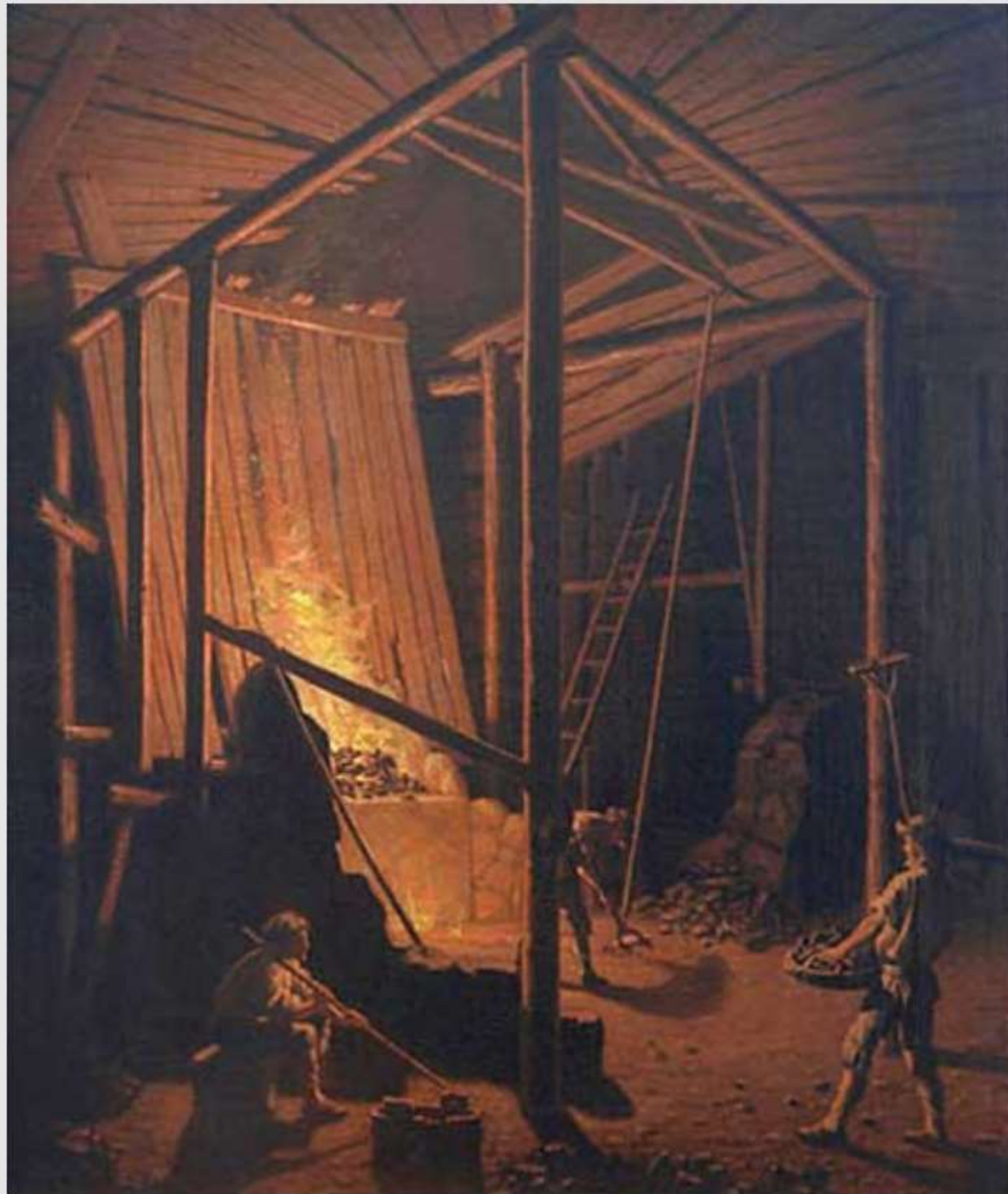
c. 1784

by

Hilleström the
Elder

(1732-1816)

<http://www.universal-prints.com/english/fine-art/images/artist/pehr-hillestroem-der-aeltere/20718/1/index.htm>

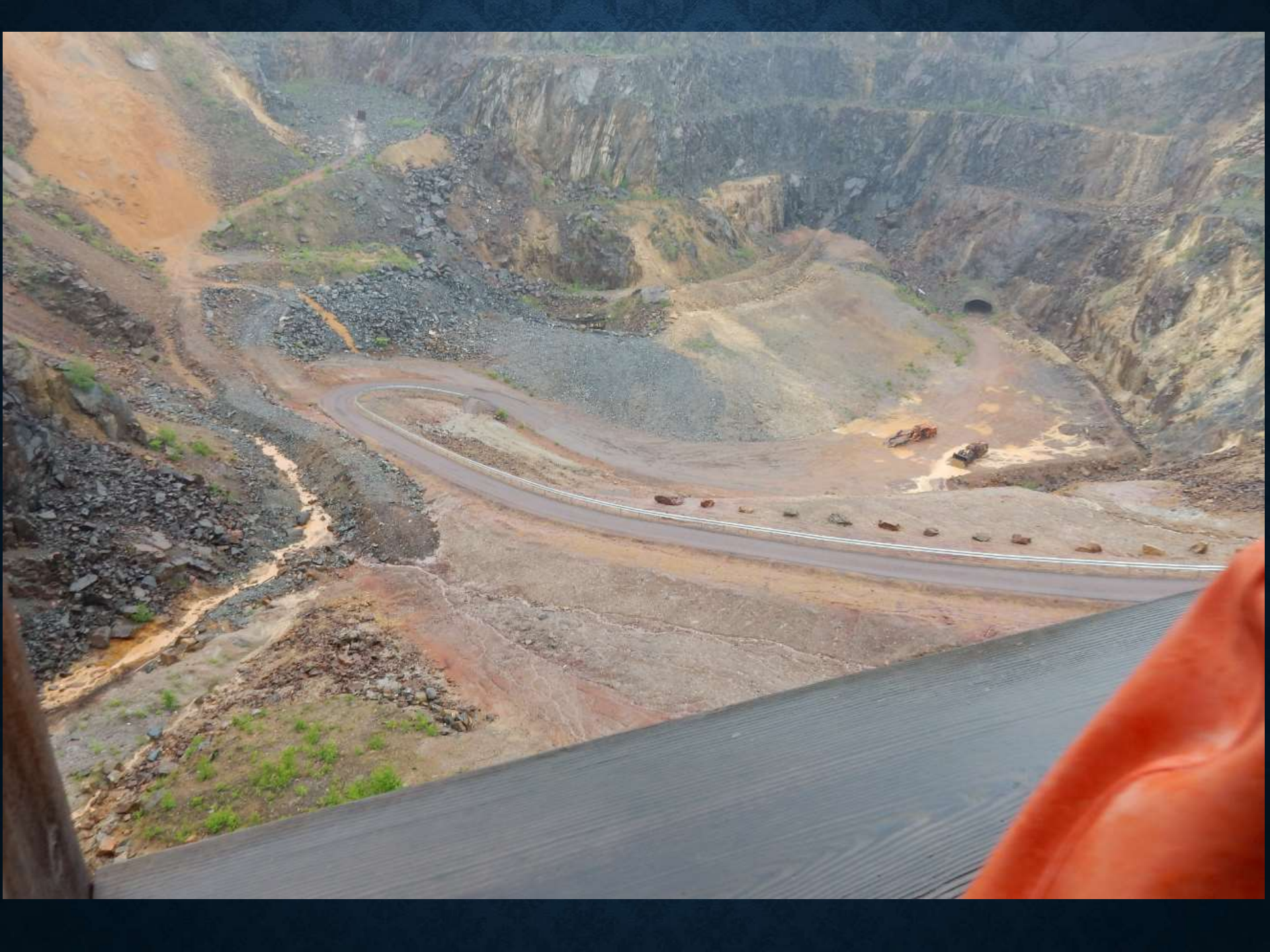




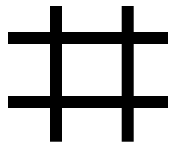
View of the Great Pit, looking towards the south. From the left: the dressing plant, the second Oscar pithead building, the New Main Office and the Fredrik pithead. Colour photograph from around 1930.











Is the symbol for mine entrance (also the Chinese symbol)



Is the symbol for copper, female, Aphrodite the goddess of love and the planet Venus.



Is the symbol for copper, female, Aphrodite the goddess of love and the planet Venus.

- Aphrodite, the goddess of love, was born in the foam of the waves and rose from the sea on a shell off the island of Cyprus
- Cyprus means “copper island”, Cyprus was a major producer of copper in the Bronze Age
- The word *copper* comes from the latin *cuprum* “the metal from Cyprus”

**Birth of Venus
by Botticelli
(Roman equivalent)**





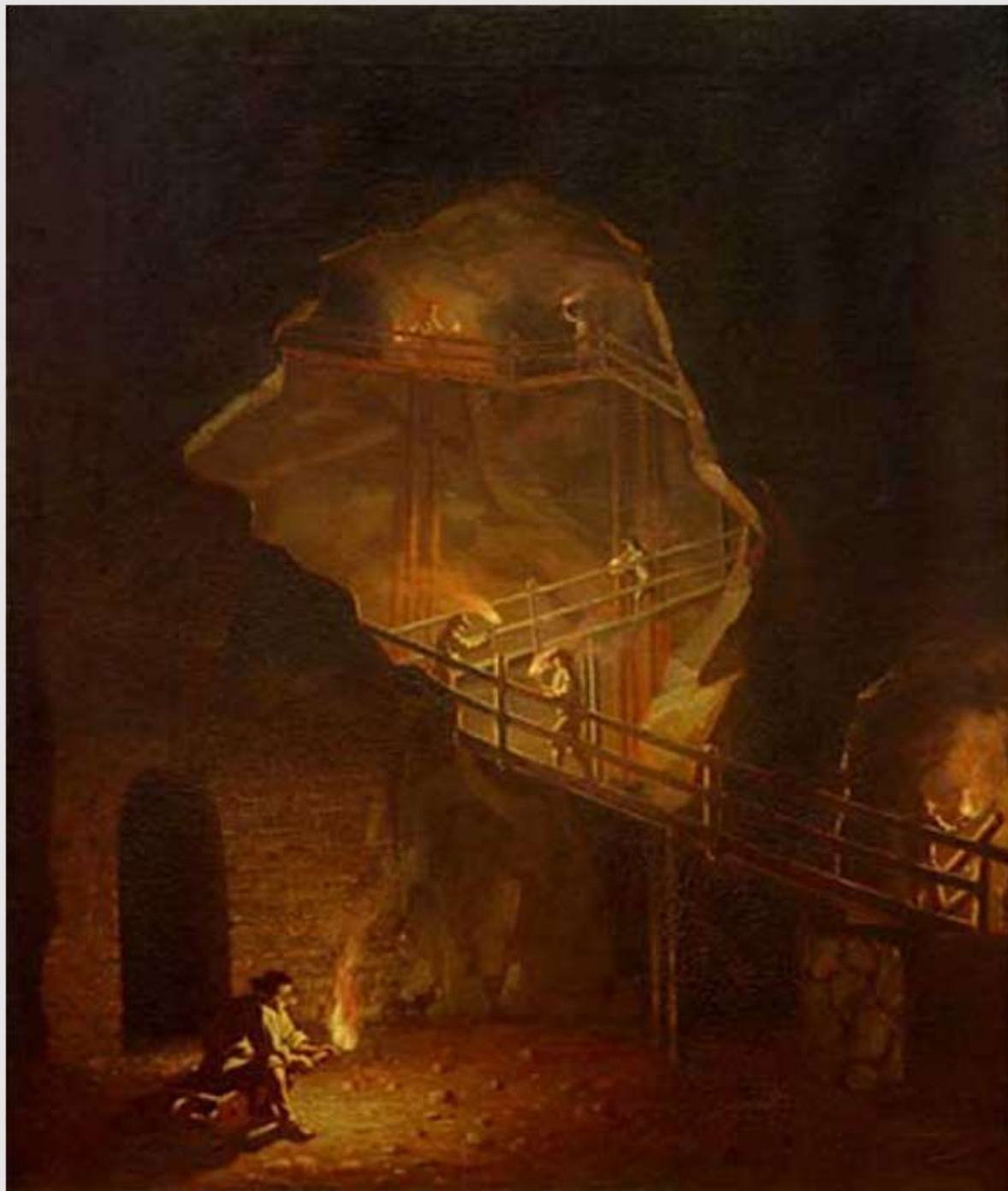












FALUN

Prince Gustaf
Gallery at the
Falun Mine

c. 1784

by

Hilleström the
Elder

(1732-1816)

<http://www.universal-prints.com/english/fine-art/images/artist/pehr-hillestroem-der-aeltere/20718/1/index.htm>

At one point, the wall separating the shaft into the transport side and the pump and ventilation side was the tallest wooden structure in the world.





